

# Table of Contents

Introduction .....	1
Script Programmer .....	2
Language .....	5
Introduction .....	5
Versions .....	5
Variables .....	5
Variables Aliases .....	5
Arithmetic Operators .....	5
Program Structure .....	5
Flow Control Functions .....	5
Interface Functions .....	5
String Functions .....	5
Conversion Functions .....	5
Math and Logic Functions .....	5
Timer functions .....	5
Source-Destinations .....	9
Source-Destinations List .....	9
Inputs .....	10
MQTT .....	11
Serial Port - Text Mode .....	12
Serial Port - Binary Mode .....	13
Built-in Modbus Slave .....	14
Script Programmer Traces .....	15
Non-volatile Memory .....	16

### Description

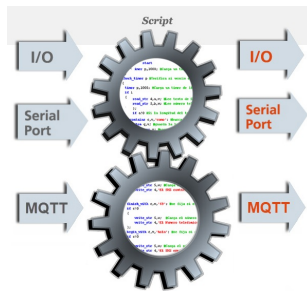
Some Exemys devices allow user-written programs to run on the device itself, making them more flexible and powerful.

The device will continue to operate normally while the script stored in its memory is running.

### Operations that can be performed from a script

- **Mathematical operations**
- **Logical operations**
- **Timing operations**
- Reading the device's own inputs and Modbus variables
- Turning digital outputs on and off
- Interpreting data from the **serial port**
- **MQTT** publish/subscribe

(Some of these operations may or may not be available depending on the programmed device)



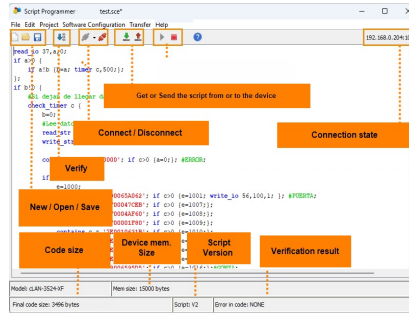
2026-05-05

**Introduction**

This program allows developing, compiling and transferring scripts to Exemys devices that support it.

**Software Description**

Below is a description of the main screen functions.



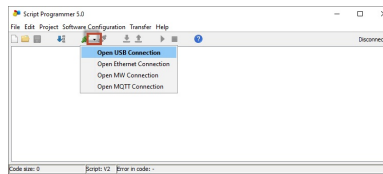
**Device Connection**

There are three ways to connect: via USB, via LAN/Ethernet, and via MW-XF depending on the device.

**Device Connection - USB**

First connect the device to the PC and make sure it is disconnected from "GRDconfig"

Then expand the Connect button and choose "Open USB Connection"

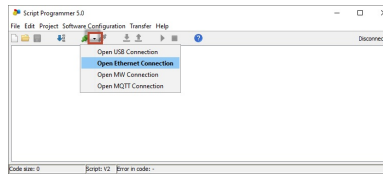


On some devices with a USB port, such as the RMS1-RM and wRemote-LoRa, you must disconnect and reconnect the device's USB port if you previously accessed the USB configuration console.

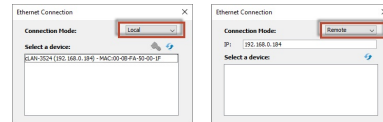
**Device Connection - LAN/Ethernet**

First connect the device to the same network as the PC and make sure it has a valid IP address configured as indicated in its user manual.

Then expand the Connect button and choose "Open Ethernet Connection"

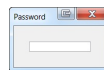


Doing so you should see the device(s) connected to your network, or you can choose the "Remote" mode to manually enter the device's IP address if it is on a different network.



Select the one you want to configure.

To connect you will need to enter the device password. It is the same one used to connect via MW.

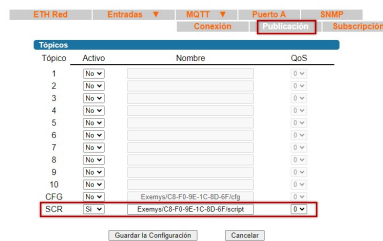


**Device Connection via MQTT**

Both the device and the Script Programmer must be connected to the same broker to send and receive scripts remotely via MQTT broker.

**Device configuration**

The SCR base topic used for publishing and subscribing must be configured. The device will append a text to the base as explained later.



**Configuration topic - Device Identification**

The device will append the ClientID to the base configuration topic. The resulting subscribe and publish topics in the previous example will be:

Subscribe -> Exemys/C8-F0-9E-1C-8D-6F/script/1/clientID

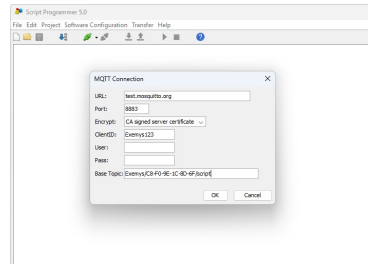
Publish -> Exemys/C8-F0-9E-1C-8D-6F/script/0/clientID

The clientID used by the device will be the one configured in the MQTT section.

**ScriptProgrammer configuration**

The broker parameters to connect to and the base topic to use for configuring remote devices must be loaded in the configurator.

To do this, go to "Software Configuration -> MQTT Connection"

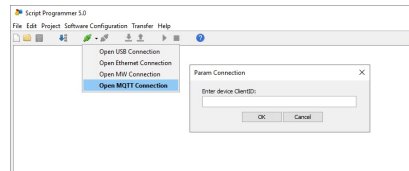


The basic topic must match the one configured on the devices.

[Remote connection](#)

Then expand the Connect button and choose "Open MQTT Connection"

There you must enter the ClientID of the device to configure.



Once the connection is established, the "Download", "Upload", "Start" and "Stop" buttons can be used as if connected locally to the device.

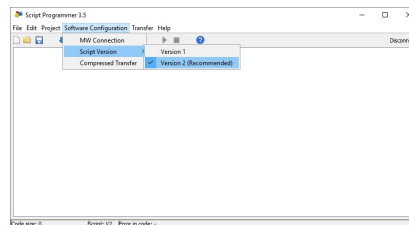
[Script Versions 1, 2 and 3](#)

In the "Project" menu, option "Properties", tab "Script" you can select between script version 1, 2 and 3.

Version 2 differs from version 1 in that it allows twice as many variables since they can be lowercase or uppercase.

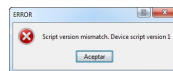
All these devices work with version 2 or 3. From version 11.0 onwards they automatically switch to version 3. Programs written in version 3 are identical to those in version 2. They only take up less space in the device memory.

Version 2/3 differs from version 1 in that it allows twice as many variables since they can be lowercase or uppercase.



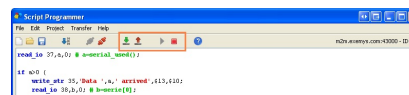
The script version will be used by Script Programmer in two situations: when verifying a script or when trying to send it to the device.

If when sending a script the selected version is not compatible with the target device, you will see a message indicating that error.



[Upload and download of scripts](#)

Once connected to the device, we can transfer and download scripts. We can also stop and start them.



[Script editing](#)

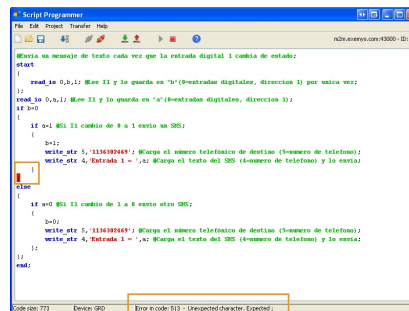
To develop a program, simply write the code in the editing panel. The environment provides autocomplete assistance for functions and highlights them to indicate correct syntax.

Once you finish writing the code, use the "Verify" button to compile the program and check for syntax errors.



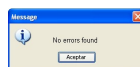
At compile time, the bottom panel will indicate whether there are errors. If there is an error, the line will be highlighted in red and the "Error in Code:" field will show the line number. If there are no errors, a message will appear showing "Error in Code: NONE".

The following image shows a program with an error; in this case a ";," is missing.

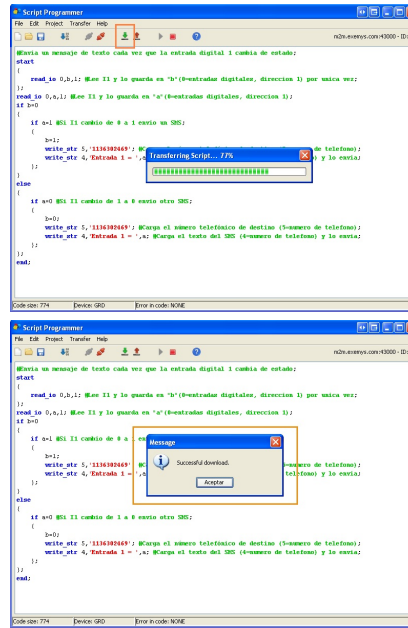


The semicolon is missing in the brace before the one marked in red; this is because the compiler indicates it found an unexpected character.

The following image shows a program without errors.



If there are no errors, we can transfer the program to the device by clicking "Download to device". A window will appear showing the download status and then a message indicating whether the download was successful or not.

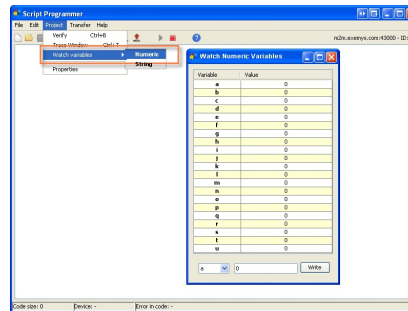


**Script debugging**

The Script Programmer has two tools for debugging written scripts.

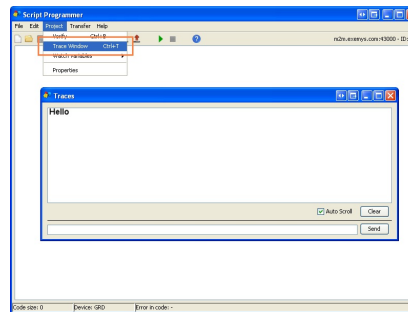
**Variable monitoring**

With this tool you can view the value of numeric or text variables while the program is running. You can also modify the value of variables to simulate script working conditions. Once connected to the device, go to the "Project" menu, option "Watch variables" and then "Numeric" or "String" depending on the type of variable to monitor.



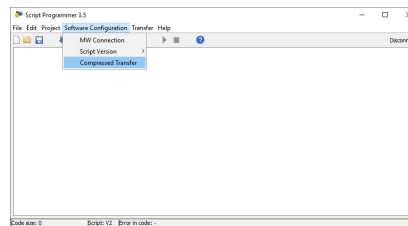
**Transmission and reception of traces**

With this tool you can send text from the script to the Script Programmer to follow the script's operation. Text can also be sent to simulate script working conditions. Once connected to the device, go to the "Project" menu, option "Trace Window"



**Script compression**

The device has limited space for storing scripts. In almost all devices the maximum is 15,000 characters. There are some cases where it is limited to 5,000. If this space is not sufficient for your application, you can use the script compression option. When enabled, the Script Programmer will remove all comments and tabs before sending the program. If you want to keep the comments in your program, save a copy on your computer. To enable compression, go to the "Software Configuration" menu, option "Compressed Transfer"



**Introduction**

The **Exemys Script** programming language is a loop-type language, meaning it executes all code up to the last line and then starts again. There are no statements to create loops within the program, so the program flow cannot be stopped at a specific code section. In this regard it resembles PLC programming, although its syntax is closer to C or Pascal.

**Script Versions 1, 2 and 3**

There are 3 script versions. Version 2 differs from version 1 in that it allows twice as many variables since they can be lowercase or uppercase. In version 1 variables are only written in lowercase. Version 3 saves between 20 and 30% of the space occupied by the program in the device memory, allowing longer programs to be loaded. You can notice the difference by pressing the verify button.

**Variables**

There are 2 types of variables: numeric of type **"long"** and text of type **"string"**. It is not necessary to define variables since there is a fixed number. In script version 2, numeric variables are 42, from "a" to "u" and from "A" to "U". Text variables are 10, from "v" to "z" and from "V" to "Z", with a maximum length of 100 characters each. Since numeric variables are of type "long", any operation that yields a decimal result will be truncated. The initial value of numeric variables is 0, for text variables it is an empty string.

**Assign a value to a variable:**

- Numeric variables:

```
a = 652;
```

- Text variables:

```
v = 'Hello'
```

Note that to assign text, it must be placed in single quotes.

**String concatenation:**

To concatenate variables, simply place them one after the other, separated by commas.

For example:

```
a = 20;
u = 'The temperature is: ';
v = ' °C';
```

If we want to form the string 'The temperature is 20 °C' and store it in another variable we do the following:

```
w = u, a, v;
```

Another way to do it would be:

```
w = 'The temperature is: ', a, ' °C';
```

Concatenation can only be done in text assignment to string variables and in the write\_str function

**Insertion of ASCII values in strings:**

To insert an ASCII value in a string, the \$ operator can be used. After the operator, the ASCII code in decimal must be specified. ASCII 0 is not allowed.

For example:

```
z = 'Hello', $13, $10;
```

ASCII value insertion can only be done in text assignment to string variables and in the write\_str function

**Variable Aliases**

From version 6.1 of the Script Programmer, variable "aliases" can be created to make the code easier to read. This code can be transferred to ALL Exemys devices that support Script Programmer, since before sending the code to the device, the alias is replaced by the corresponding variable. Since aliases are sent as comments within the code, when reading the script loaded on the device, the variables will be replaced back by the aliases, unless the compression option was used, which removes comments. It is ALWAYS recommended to keep a copy of the scripts loaded on the devices.

Example:

Before	Now
read_io 2,a,1;	#{a=\$P1};
IF a>5 {	#{b=\$P2};
write_io 1,8,1;	read_io 2,presion,1;
};	IF presion>5 {
end;	write_io 1,8,1;
	};
	end;

If you already have a written script, you can add comments indicating the aliases, send it to the device (uncompressed) and then read it back. When doing so, all variables with aliases will be replaced.

**Arithmetic operators**

Below are the operators that can be used in the script. Note that it only handles "long" type values, so any operation yielding decimal results will be truncated - only the integer part will be returned.

Operator	Meaning
=	Equals
^	Exponential
	Or
&	And
+	Addition
-	Subtraction
*	Multiplication
/	Division
%	Remainder

For example:

```
a = 130;
b = a+5;
```

Resultado: La variable b vale 135.

**Program structure**

All instructions end with a semicolon ";". It is very important to keep in mind that the program runs in a loop: when the last statement is reached, it starts over. Because of this, there is a statement called **"start"** that runs only once when the program starts. Inside this block, initial values for variables or any other initialization can be placed. Every program must end with the instruction **"end;"**.

Below is the typical structure of a program:

```
start
{
  a = 10;
};
a = a + 1;
end;
```

This simple example shows how the **"start"** function is used to initialize variable "a" to 10 only once and then increment it by 1 continuously. As we can see, all instructions after the **"start"** block and before **"end;"** are executed cyclically.

**Comments:**

To add a comment to the program, prepend the text with the **"#"** character and end it with ";".

For example:

```
start
{
  a = 10; #Initialize variable a = 10;
};
a = a + 1; #Increment variable a;
end;
```

**Flow control functions**

Flow control specifies the order in which certain lines of code will be executed. In our case there are 3 functions for flow control: **"start"**, **"if-else"** and **"end"**.

**Function "start"**

Used to execute lines of code only once when the program starts. The instructions to execute are placed between braces, and after the closing brace ";" must be placed.

**Syntax:**

```
start
{
  ...;
  ...;
};
```

**Function "if-else"**

This function is used for decision-making. If the condition placed after **"if"** is valid, the instructions in the braces below will execute; otherwise the instructions inside **"else"**.

The execution condition can use the following operators:

Operator	Function
=	Equal
!	Different
>	Greater

>	than
<	Less than

The condition is written leaving a space after "if"

**Syntax:**

Only "if":

```
if condition
{
...
};
```

After the closing brace of "if" a ";" must be placed.

"if-else":

```
if condition
{
...
}
else
{
...
};
```

In this case, the ";" is placed after the closing brace of "else", not after "if".

Function "end"

Used only to indicate the end of the program; after executing it, the program returns to the first line of code.

**Syntax:**

```
end;
```

### Interface functions (sources/destinations)

These functions allow reading data from various sources and sending data to various destinations.

Function "read\_io"

Allows reading indexed parameters from various sources, such as values of digital input channels, digital output channels, analog inputs, etc.

The data "source" must be indicated with a number. If applicable, the "index" parameter specifies the position within that source. The reading result is stored in a numeric variable.

**Syntax:**

```
read_io source,numeric_variable,index;
```

The available sources depend on the device where the script runs and the script version. New sources may be added in the future. Refer to the sources/destinations section for more details.

Function "write\_io"

Allows writing indexed parameters to various destinations, such as values of digital output channels, pulse outputs, etc.

The "destination" where to write must be indicated with a number. If applicable, the "index" parameter specifies the position within that destination.

The "value" to write can be a number or a numeric variable.

**Syntax:**

```
write_io destination,index,value;
```

The available destinations depend on the device where the script runs and the script version. New destinations may be added in the future. Refer to the sources/destinations section for more details.

Function "read\_str":

Allows reading strings from various sources, such as data received from a serial port or by SMS. The "source" must be indicated with a number.

The reading result is stored in two variables: one of type string and one of type numeric, indicating the string length. If there is no data, this parameter will be 0.

**Syntax:**

```
read_str source,numeric_variable,string_variable;
```

The available sources depend on the device where the script runs and the script version. New sources may be added in the future. Refer to the sources/destinations section for more details.

Function "write\_str":

Allows writing strings to various "destinations", such as the serial port or SMS. The "destination" must be indicated with a number and the string to send.

**Syntax:**

```
write_str destination,string;
```

The available destinations depend on the device where the script runs and the script version. New destinations may be added in the future. Refer to the sources/destinations section for more details.

The string can be a variable or a string written in the function. This function supports concatenation and inclusion of ASCII values.

### String functions

These functions allow performing various operations on string-type program variables.

Function "is\_equal"

Compares a string variable with a string (fixed text or string variable). Returns 0 if they differ and 1 if they are equal.

**Syntax:**

```
is_equal numeric_variable,string_variable,string;
```

**Example:**

```
v="Turn off";
is_equal c,v,"Turn off";
if c==1 {
#The texts are equal;
};
```

Function "finish\_with"

Determines if a string variable ends with a particular string (fixed text or string variable). Returns 0 if false or 1 if true

**Syntax:**

```
finish_with numeric_variable,string_variable,string;
```

**Example:**

```
v="Turn off";
finish_with c,v,"off";
if c==1 {
#The string stored in v ends with 'off';
};
```

Function "begin\_with"

Determines if a string variable begins with a particular string (fixed text or string variable). Returns 0 if false or 1 if true

**Syntax:**

```
begin_with numeric_variable,string_variable,string;
```

**Example:**

```
v="Turn off";
begin_with c,v,"Turn";
if c==1 {
#The string stored in v starts with "Turn";
};
```

Function "contains":

Determines if a string variable contains a particular string (fixed text or string variable). Returns 0 if not found, or the position where it was found if found.

**Syntax:**

```
contains numeric_variable,string_variable,string;
```

**Example:**

```
v="Turn off";
contains c,v,"off";
if c>0 {
#The string stored in v contains the text 'off';
};
```

Function "upper"

Converts all characters of a string variable to uppercase, storing the result in the same variable.

**Syntax:**

```
upper string_variable;
```

**Example:**

```
v="OFF";
upper v;
#Now v equals 'OFF';
```

**Function "lower"**

Converts all characters of a string variable to lowercase, storing the result in the same variable.

**Syntax:**

```
lower string_variable;
```

**Example:**

```
v="OFF";
lower v;
#Now v equals 'off';
```

**Function "strlen"**

Returns in a numeric variable the length of a string variable.

**Syntax:**

```
strlen numeric_variable,string_variable;
```

**Example:**

```
v="Apagar";
strlen c,v;
#Now c equals 6;
```

**Function "substr"**

Returns a part of a string variable within the same variable

**Syntax:**

```
substr start,end,string_variable;
```

**Example:**

```
v="APAGAR BOMBA";
substr 2,3,v;
#Now v equals 'PA';
```

**Conversion functions**

These functions convert variables from one type to another.

**Function "point"**

Places the decimal point on a numeric variable and converts it to a string.

Parameters are: the numeric variable, the string variable, and the number of decimal places.

**Syntax:**

```
point string_variable,numeric_variable,decimal_places;
```

**Example:**

```
c=123;
point v,c,1;
#Now v equals '12.3';
```

**Function "atof"**

Converts a number within a string to a numeric variable. Starts at the beginning of the string and ends where a non-numeric value or end of string is found.

**Syntax:**

```
atof numeric_variable,string_variable;
```

**Example:**

```
v="123 RPM";
atof c,v;
#Now c equals 123;
```

**Funciones "day", "month", "year", "hs", "min", "sec" y "nday"**

These functions convert a *time\_stamp* to day, month, year, hour, minute, second and day of week number, respectively.

As seen previously, the current date/time is read with the *read\_io* type 7 function and stored in a numeric variable representing the number of seconds since 01/01/2000.

**Syntax:**

```
day day,timestamp;
month month,timestamp;
year year,timestamp;
hs hour,timestamp;
min minutes,timestamp;
sec seconds,timestamp;
nday day_of_week,timestamp;
```

The "nday" function returns the day of the week number starting from Sunday = 0.

**Example:**

```
read io 7,e,0; #Read the current time into e;
day f,e;
month g,e;
year h,e;
hs i,e;
min j,e;
sec k,e;
#The current date and time is f/g/h i;j:k;
```

**Mathematical and logical functions**

These functions perform certain special mathematical operations.

**Function "neg"**

Used to negate a numeric variable. Negation is performed at the bit level.

**Syntax:**

```
neg resultado,inicio;
```

First place the variable in which to obtain the result, then the variable to negate.

**Example:**

```
a=32323; #7E43h
neg b,a;
# b vale 4294934972 (FFFF81BC);
```

**Function "sqrt"**

Performs the square root. Since Exerxys Script only handles integer variables of type "long", the decimal part of the result will be truncated. To avoid this, it is recommended to multiply before performing the operation.

**Syntax:**

```
sqrt result,base;
```

**Example:**

```
a=225;
sqrt b,a;
#Now b equals 15;
```

**Function "scale"**

Allows scaling a variable using the equation of a line passing through 2 points.

**Syntax:**

```
scale resultado,inicio,x0,x1,y0,y1;
```

**Example:** Scale the 4-20mA signal from input AN1 to a value from 0 to 500

```
read io 2,a,1; #a = AN1;
scale c,a,400,2000,0,500;
#Now c holds the scaled value;
```

**Timer functions**

These functions allow controlling program flow based on time intervals.

**Functions "timer" and "check\_timer"**

These functions allow defining a time period and executing instructions when it elapses.

The usage is as follows: first, execute the "timer" function, passing a numeric variable and a time in milliseconds as parameters. Then query that variable with the "check\_timer" function.

**Syntax:**

```
timer numeric_variable,time_in_milliseconds;
...
check_timer numeric_variable
{
  ...
  ...
}
```

```
}:
```

As we can see, with the `timer` function we define the time period, and with `check_timer` we query the previously loaded variable. When the period elapses, the instructions placed between braces execute. Keep in mind that once the period elapses, the condition will always be true, and if `check_timer` is called again, the instructions will execute again. The variable is normally reloaded inside the `check_timer` block.

**Note:** Timer functions should not be used in time-precision applications, as the timer may exhibit some jitter.

2026-05-05

Introduction

Using the read\_io, write\_io, read\_str and write\_str functions, multiple additional RME2-AI functions can be accessed. This section of the manual lists the different sources/destinations and then explains their use by function.

Source/destination list

Source / Destination	Index	Value	R/W	Description	Function	Firmware
2	1 to 8	400 to 2000 - 0 to 1000	read_io	Analog input		10.4
306	1 to 100	See Modbus table in manual	read_io	1 to 8 Analog value 9 to 16 Alarm status 0/1/2 17 to 24 Scaled value 25 to 32 A/D counts 33 to 40 Input type 0/1 41 to 48 Alarm configuration 0/1/2/3	I/O	10.4
1000	0	0 to 10	read_io	Pending received messages		10.4
1001	0	5 -> Connected	read_io	Connection status with the broker		10.4
1002	0	2 -> Sent OK	read_io	Status of the last publication		10.4
1000	-	-	read_str	Read first message in subscription queue	MQTT	10.4
1003	-	-	read_str	Topic of the message in subscription queue read with 1000		10.4
1001	-	-	write_str	Load topic to publish		10.4
1002	-	-	write_str	Load payload to publish and publish		10.4
5	4	1 -> COM A	write_io	Enables COM N in Script mode (in start, write_io 5.4.1; COM A script)	Serial	10.4
402		0	write_io	Serial transmit buffer - Select and initialize		10.4
405	12	0	write_io	Serial transmit buffer - Send binary data loaded with 405/404	Serial Transmission	10.4
405	-	-	write_str	Serial transmit buffer - Load and send text (select buffer first)		10.4
402	13	0 a 199	write_io	Serial receive buffer - Select and position		10.4
405	-	0 to N	write_io	Serial receive buffer - Empty into the buffer (0 = All)	Serial	10.4
405	-	0 to 200	read_io	Serial receive buffer - Number of bytes (select buffer first)	Reception	10.4
405	-	-	read_str	Receive text (select buffer first)		10.4
402	3	1 to 1000	write_io	Modbus buffer - Select and position (Auto-increment for writing)	Modbus slave	10.4
403	1	10*N -2 -> 0.01 -1 -> 0.1 0 -> 1 1 -> 10 2 -> 100	write_io	Buffers - Configure exponent for floating-point values	MB/Serial slave	10.4
	2	0 -> MSB / 1 -> LSB 0 -> MSW / 1 -> LSW	write_io	Buffers - Configure byte/word order	MB/Serial	10.4
404	1	-	read/write_io	Buffers - Unsigned 8-bit integer	Serial	10.4
	2	Number according to format	read/write_io	Buffers - Signed 8-bit integer	Serial	10.4
	3	-	read/write_io	Buffers - Unsigned 16-bit integer	MB/Serial	10.4
	4	exponent, and order	read/write_io	Buffers - Signed 16-bit integer	MB/Serial	10.4
	6	-	read/write_io	Buffers - Signed 32-bit integer	MB/Serial	10.4
	7	-	read/write_io	Buffers - 32-bit floating-point value	MB/Serial	10.4
35	-	-	read/write_str	Script Programmer traces	Traces	10.4
21	1 to 20	0 to 2147483647	read/write_io	Non-volatile memory for numbers	Mem. Non-volatile	10.4
121 to 125	-	-	read/write_str	Non-volatile memory for text 1 to 5		10.4

2026-05-05

[Input readings](#)

Source / Destination	Index	Value	R/W	Description	Function
2	1 to 8	400 to 2000 0 to 1000	read_io	Analog input	I/O
306	1 to 8	See Modbus table in manual	read_io	1 to 8 Analog value 9 to 16 Alarm status 0/1/2 17 to 24 Scaled value 25 to 32 A/D counts 33 to 40 Input type 0/1 41 to 48 Alarm configuration 0/1/2/3	

Source 2 returns the values of the different inputs. The "index" indicates the input number to read. The value ranges from 400 to 2000 for inputs configured in current mode, and from 0 to 1000 for inputs in voltage mode.

Source 306 provides access to more detailed information and configuration data. The values are format-equivalent to the Modbus table. Refer to the user manual for more details.

**Example:** Read the value of analog input 4 and store it in variable c

```
read_io 2,c,4;
```

**Example:** Read the scaled value of analog input 4 and store it in variable c

```
read_io 306,c,20;
```

2026-05-05

**MQTT**

From the script, publications can be made using specific criteria and formats different from those that can be sent through the standard configuration. In addition, messages can be received from the topics to which the device is subscribed.

Source / Destination	Index	Value	R/W	Description	Function
1000	0	0 to 10	read_io	Pending received messages	MQTT
1001	0	5-> Connected	read_io	Connection status with the broker	
1002	0	2-> Sent OK	read_io	Status of the last publication	
1000	-	-	read_str	Read first message in subscription queue	
1003	-	-	read_str	Topic of the message in the subscription queue read with 1000	
1001	-	-	write_str	Load topic to publish	
1002	-	-	write_str	Load payload to publish and publish it	

**Publication example:** Publish every 10 seconds a number that increments with each transmission

```

check_timer t1
a=a+1;
read_io 1001,g,0; #Connection status with the broker;
if g = 5{ #Connected;
write_str 1001,'Test/Topic'; #Write topic;
M = '{ "VANI":',a,'}';
write_str 1002,M;
read_io 1002,r,0; #h contains the transmission status;
};
timer t,10000;
};
end;

```

**Message reception example:** Receives a message and identifies which topic it belongs to. It sends it to the Traces console. The topics must first be loaded in the device web configuration.

```

read_io 1000,a,0; #MQTT - Pending received messages;
if a > 0{
read_str 1000,e,Y; #Read first message in subscription queue;
read_str 1003,e,X; #Topic of the message just read from the subscription queue;
write_str 35,'Subscription messages for topic: ',X,': ',Y,$13,$10;
};
end;

```

2026-05-05

**Serial Port - Text Mode**

From the script, data can be sent and received in text mode. On the RME2, configure the serial port as NOT enabled in order to access it from the script. To send and receive binary data, read "Serial Port - Binary Mode"

Source / Destination	Index	Value	R/W	Description	Function
5	4	1-> COM A	write_io	Enables COM N in Script mode (in start, write_io 5,4,1; COM A script)	Serial
402	12	0	write_io	Serial transmit buffer - Select and initialize	Serial Transmission
405	-	-	write_str	Serial transmit buffer - Load and send text (select buffer first)	
402	13	0 a 199	write_io	Serial receive buffer - Select and position	
405	-	0 a N	write_io	Serial receive buffer - Empty into the buffer (0 = All)	Serial Reception
405	-	0 to 200	read_io	Serial receive buffer - Number of bytes (select buffer first)	
405	-	-	read_str	Receive text (select buffer first)	

**Send example:** Port initialization and transmission of text 'HOLA'

```
start {
  write_io 5,4,1; #Configure COM A in script mode;
};

if end {
  a=1;
  write_io 402,12,0; #Select serial buffer;
  write_str 405,'HOLA'; #echo write;
};
end;
```

**Receive example:** Receive text characters until a 'CR' (ASCII 13) is found and store the text in string variable v

```
start {
  write_io 5,4,1; #Configure COM A in script mode;
};

write_io 402,13,0; #Select serial RX buffer;
read_io 405,b,0; #Received count;

if b10 {
  read_str 405,c,z; #Read text in buffer;
  if c101 {
    y=13; contains d,z,y; #Search for CR;
    if d101 {
      v=z; #Store the received text in v;
      write_io 402,13,0; #Select serial RX buffer;
      write_io 405,13,d; #delete everything read up to CR;
    };
  };
};
end;
```

2024-04-23

**Serial Port - Binary Mode**

From the script, data can be sent and received in binary mode. On the RME2, configure the serial port as NOT enabled in order to access it from the script.

To send and receive text, read "Serial Port - Text Mode"

Sources/destinations 402, 403, 404 and 405 used to access the buffer may be shared by other functions.

Source / Destination	Index	Value	R/W	Description	Function
5	4	1-> COM A	write_io	Enables COM N in Script mode (in start, write_io 5,4,1; COM A script)	Serial
402	12	0	write_io	Serial transmit buffer - Select and initialize	Serial Transmission
405		0	write_io	Serial transmit buffer - Send binary data loaded with 403/404	
402	13	0 a 199	write_io	Serial receive buffer - Select and position	Serial Reception
405		0 or N	write_io	Serial receive buffer - Empty the buffer (0 = All)	
405	-	0 to 200	read_io	Serial receive buffer - Number of bytes (select buffer first)	
		IGN			
	1	-2-> 0.01 -1-> 0.1 0-> 1 1-> 10 2-> 100	write_io	Buffers - Configure exponent for floating-point values	Binary buffer
403	2	0-> MSB / 1 -> LSB 0-> MSW / 1 -> LSW	write_io	Buffers - Configure byte/word order	
	1		read/write_io	Buffers - Unsigned 8-bit integer	
	2	Number according to format	read/write_io	Buffers - Signed 8-bit integer	
	3		read/write_io	Buffers - Unsigned 16-bit integer	
	4	exponent, and order	read/write_io	Buffers - Signed 16-bit integer	
	6		read/write_io	Buffers - Signed 32-bit integer	
	7		read/write_io	Buffers - 32-bit floating-point value	

**Send example:** Port initialization and transmission of a binary frame with numbers in different formats.

```
start {
  write_io 5,4,1; #Configure COM A in script mode;
};

if a=0 {
  a=1;

  write_io 402,12,0; #Select binary buffer;

  write_io 403,2,0;#MSB;
  write_io 404,4,-3000; #SINT16;
  write_io 404,4,1000; #SINT16;
  write_io 403,2,0;#MSW;
  write_io 404,6,-70000; #SINT32;
  write_io 404,6,70000; #SINT32;
  write_io 403,2,1;#LSB;
  write_io 404,6,-70000; #SINT32;
  write_io 404,6,70000; #SINT32;
  write_io 403,2,1;#LSW;
  write_io 404,4,1000; #SINT16;
  write_io 403,2,0;#MSB;
  write_io 404,4,1000; #SINT16;

  write_io 403,2,0;#MSW;
  write_io 403,1,2;#I10^2; #/100;
  write_io 404,7,123456; #FLOAT32;
  write_io 403,1,-2;#I10^-2; #*100;
  write_io 404,7,123456; #FLOAT32;
  write_io 403,2,1;#LSW;
  write_io 403,1,2;#I10^2; #/100;
  write_io 404,7,123456; #FLOAT32;
  write_io 403,1,-2;#I10^-2; #*100;
  write_io 404,7,123456; #FLOAT32;
};

write_io 405,12,0; #Send loaded data;
};

end;
```

These bytes are output on the serial port (expressed in hexadecimal)

```
F4 48 03 E8 FF FE EE 90 00 01 11 70 EE 90 FF FE 11 70 00 01 E8 03 03 E8 44 9A 51 EC 4C 3C 61 00 51 EC 44 9A 61 00 4B 3C
```

**Receive example:** Port initialization and reception of 39-byte frames with values in different formats. The transmitted data are shown below in hexadecimal.

```
F4 48 03 E8 FF FE EE 90 00 01 11 70 EE 90 FF FE 11 70 00 01 E8 03 03 E8 44 9A 51 EC 4C 3C 61 00 51 EC 44 9A 61 00 4B 3C
12 34 56 78 90
```

The received data are stored in different script variables. These are the results

- B=-3000
- C=1000
- D=-70000
- E=70000
- F=-70000
- G=70000
- H=1000
- I=1000
- J=123456
- K=123456
- L=123456
- M=123456

```
start {
  write_io 5,4,1; #Configure COM A in script mode;
};

write_io 402,13,1; #Select binary buffer;

read_io 405,A,0; #Read how many bytes are in the buffer;
if A>39{
  write_io 403,2,0;#MSB/MSW;
  write_io 402,13,1; read_io 404,B,4; #SINT16;
  write_io 402,13,3; read_io 404,C,4; #SINT16;
  write_io 402,13,5; read_io 404,D,6; #SINT32;
  write_io 402,13,9; read_io 404,E,6; #SINT32;
  write_io 403,2,1;#LSB/LSW;
  write_io 402,13,13; read_io 404,F,6; #SINT32;
  write_io 402,13,17; read_io 404,G,6; #SINT32;
  write_io 402,13,21; read_io 404,H,4; #SINT16;
  write_io 403,2,0;#MSB/MSW;
  write_io 402,13,23; read_io 404,I,4; #SINT16;
  write_io 402,13,25; write_io 403,1,2; read_io 404,J,7; #I0^2 /100 FLOAT32;
  write_io 402,13,29; write_io 403,1,-2; read_io 404,K,7; #I0^-2 *100 FLOAT32;
  write_io 403,2,1;#LSB/LSW;
  write_io 402,13,33; write_io 403,1,2; read_io 404,L,7; #I0^2 /100 FLOAT32;
  write_io 402,13,37; write_io 403,1,-2; read_io 404,M,7; #I0^-2 *100 FLOAT32;
  write_io 405,13,0; #Empty the entire reception buffer;
};

end;
```

2025-09-30

**Internal Modbus Slave**

The device has a memory area of 1000 words that can be read or written from the script.  
 This mainly allows calculations to be performed with input values and made available in the internal Modbus register.  
 The registers range from Holding Register 1001 to 2000 (41001 to 42000)  
 Sources/destinations 403 and 404 used to access the buffer may be shared by other functions.  
 After choosing the buffer and position with destination 402, the address auto-increments as data is loaded.

Source / Destination	Index	Value	R/W	Description	Function
402	3	1 to 1000	write_io	Modbus buffer - Select and position (Auto-increment for writing)	Modbus slave
403	1	10^N -2->0.01 -1->0.1 0->1 1->10 2->100	write_io	Buffers - Configure exponent for floating-point values	
		0->MSB / 1->LSB 0->MSW / 1->LSW	write_io	Buffers - Configure byte/word order	
		3 4 6 7	read/write_io	Buffers - Unsigned 16-bit integer Buffers - Signed 16-bit integer Buffers - Signed 32-bit integer Buffers - 32-bit floating-point value	

**Write example:** Load the following values into Modbus registers starting from 41001

```

Modbus register  Value (orden byte/word)  Hexadecimal value
41001            -3000 (MSB)              F448
41002            1000 (MSB)              03E8
41003:4          -70000 (MSW)            FFFEE90
41005:6          70000 (MSW)            0001170
41007:8          -70000 (LSB)            EE90FFE
41009:10         70000 (LSB)            1170001
41011            1000 (LSB)              E803

write_io 402,3,1; #Select Modbus buffer and position at address 1 (41001);

write_io 403,2,0;#MSB;
write_io 404,4,-3000; #41001;
write_io 404,4,1000; #41002;
write_io 403,2,0;#MSW;
write_io 404,6,-70000; #41003:4;
write_io 404,6,70000; #41005:6;
write_io 403,2,1;#LSB;
write_io 404,6,-70000; #41007:8;
write_io 404,6,70000; #41009:10;
write_io 403,2,1;#LSB;
write_io 404,4,1000; #41011;

end;
    
```

**Read example:** Read the values of Modbus registers 41001 to 41011 and load them into variables with different formats.

Modbus register	Hexadecimal value	Variable value
41001	F448	a=-3000
41002	03E8	b=1000
41003:4	FFEE90	c=-70000
41005:6	0001170	d=70000
41007:8	EE90FFE	e=-70000
41009:10	1170001	f=70000
41011	E803	g=1000

```

write_io 403,2,0;#MSB;
write_io 402,3,1; read_io 404,a,4; #41001;
write_io 402,3,2; read_io 404,b,4; #41002;
write_io 403,2,0;#MSW;
write_io 402,3,3; read_io 404,c,6; #41003:4;
write_io 402,3,5; read_io 404,d,6; #41005:6;
write_io 403,2,1;#LSW;
write_io 402,3,7; read_io 404,e,6; #41007:8;
write_io 402,3,9; read_io 404,f,6; #41009:10;
write_io 403,2,1;#LSB;
write_io 402,3,11; read_io 404,g,4; #41011;

end;
2026-05-05
    
```

[Transmission/Reception of messages to Script Programmer \("Traces"\)](#)

Source /Destination	R/W	Description	Function
35	read/write_str	Script Programmer Traces	Traces

Destination 35 allows sending text to the "Traces" window in the Script Programmer. This is particularly useful when testing a new script.

There is a consideration regarding space and underscore characters. The space character will be replaced by an underscore before reading with `read_str_35`. The underscore will be replaced by a space after sending with `write_str_35`.

If the Script Programmer is not connected when writing to destination 35, the text will simply be lost but will not affect the operation of the program.

2024-04-23

[Non-volatile memory read/write](#)

The device can store text or numbers in non-volatile memory to preserve values even when the device is powered off.

Source / Destination	Index	Value	R/W	Description	Function
21	1 to 20	0 to 2147483647	read/write	io Non-volatile memory for numbers	Mem. Non-volatile
121 to 125	-	-	read/write	_str Non-volatile memory for text 1 to 5	

**For numbers**

Source/destination 21 allows reading and writing numeric values in the device's non-volatile memory.

**Example:** Read the numeric value stored at position 15 of non-volatile memory into variable g

```
read_io 21,g,15;
```

**For text**

Sources/destinations 121 to 125 allow reading and writing up to 5 texts in the device's non-volatile memory.

**Example:** Write the word 'hello' into the third position of non-volatile text memory.

```
write_str 123,'hello';
```

2026-05-05