

SSE232- IA Quick Start Guide

Serial Server for Industrial Automation with digital I/O's

1. Introduction

This quick guide will lead you step by step through the most important aspects of SSE232-IA installation. It is intended to system administrators that are familiar with operating systems or other Exemys products.

IMPORTANT.

You will find a detailed description for SSE232-IA installation and configuration in the User's Manual . You will find this Manual in the CD that is distributed together with this product or you can download it from our web site.

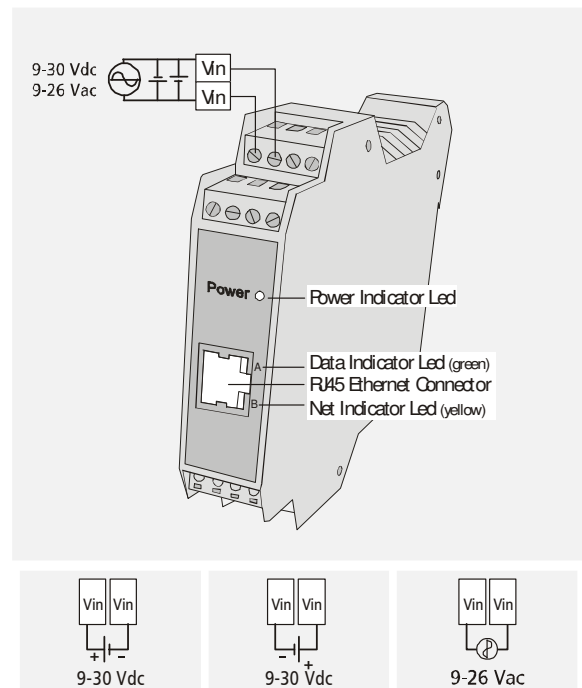
This product must be installed and powered according to its ratings and installation instructions.

The unit shall be powered from a NEC class 2 source of supply or a LPS source, having an output rated 9-26 Volts AC, 9-30 Volts DC, 200 mA min.

The installation of this product inside shall be in accordance with the NEC, specifically Article

725-54. Wiring from/to this unit is to be Class 2 wiring and shall be segregated from other wiring in the equipment as noted in the NEC.

The network connection is made through the Ethernet connector (see figure). Use a crossover network cable if the connection is made directly to a PC.



Front and Rear View

2. Configuration

NOTE.

If you do not have a PC in the Network running Windows 95/98/NT/XP/2000, you will find an alternative method to configure the network basic parameters in the User's Manual.

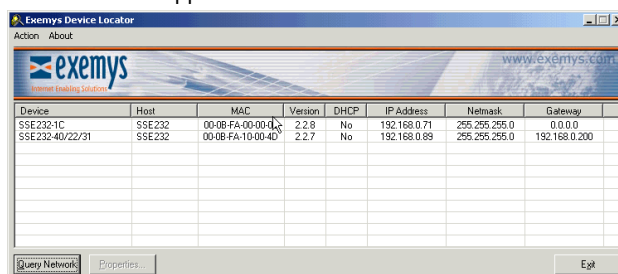
To configure SSE232-IA you will need an IP address to be assigned to the SSE232-IA or a DHCP server in your network.

Follow the next steps to configure SSE232-IA:

- Connect SSE232-IA to the Ethernet supply network.
- Connect SSE232-IA to the power.
- Execute the Program "Exemys Device Locator" from a PC within the same network. You will find this program in the CD that is distributed together with this product or you can download it from our web site. SSE232 IA will appear on the list of devices found in the network.
- To enter to the SSE232-IA configuration web page use a web browser that allows JavaScript. By typing SSE232-IA's IP Address in the "address" field of your browser, you will access SSE232-IA configuration web page.

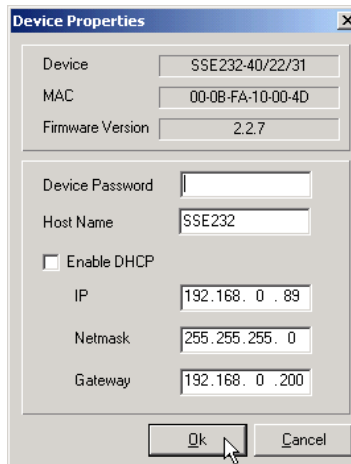
For configuration, you may also use the Exemys Device Locator software, included in your CD.

SSE232-IA will appear in the list of devices found in the



Network

- Double-click on SSE232-IA in the list or press "Properties".



- If your Network has a DHCP server, select "Enable DHCP" and click Ok.

- If your network does not have a DHCP server, you must complete manually the network parameters.

- In the Properties dialog box type: IP Address Netmask Gateway.

- Then click Ok.

- SSE232-IA will reset to update the changes. After a few seconds, if the yellow led of the network connector (see figure) blinks, being dark most of the time, and lightened only for a short instant, it means that SSE232-IA properly accepted the new configuration.

NOTE.

SSE232-IA does not provide a default password for remote configuration. If this is the first time you configure SSE232-IA, do not type a password in the Properties dialog box. You will be able to change this password later on, by following the instructions contained in the User's Manual.