

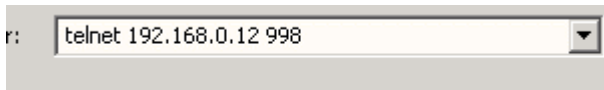
Project: KIBe		
Title: SMTP with authentication on KIBe		
	Rev:A	

SMTP with authentication on KIBe

Some SMTP servers (used for outgoing emails) require SMTP authentication. The KIBe supports this feature but it's not configurable through the WEB page.

To enable it use the configuration console on port 998. Once your are logged in type the command: SMTPAUTH:E

This will Enable SMTP authentication. If you type SMTPAUTH: D this will disable it.



```


KIBe - Exemys (V2.1.9) :
-----
>SMTPAUTH:E

Authentication ENABLED

>

```

The username and password used to authenticate SMTP will be the same the you must configure for the POP client through the WEB page.



- [General Configuration](#)
- [POP Client](#)
- [SMTP Client](#)
- [E-Mails](#)
- [Inputs](#)
- [General State](#)
- [Administrator](#)

POP3 Client Configuration

POP Client Enable

POP Server

Timeout (5..200sec)

Check Interval (10..10000sec)

User

Password

Confirm Password

If you need assistance please contact as through: support@exemys.com