

# KIBe-E Quick Start Guide

Know It and do it By e-mail

## 1. Introduction

This quick guide will lead you step by step through the most important aspects of KIBe-E installation. It is intended to system administrators that are familiar with operating systems or other Exemys products.

### IMPORTANT.

You will find a detailed description for KIBe-E installation and configuration in the User's Manual that is distributed together with this product in the CD or you can download it from our web site.

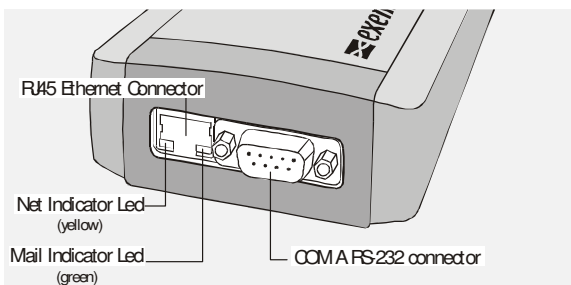
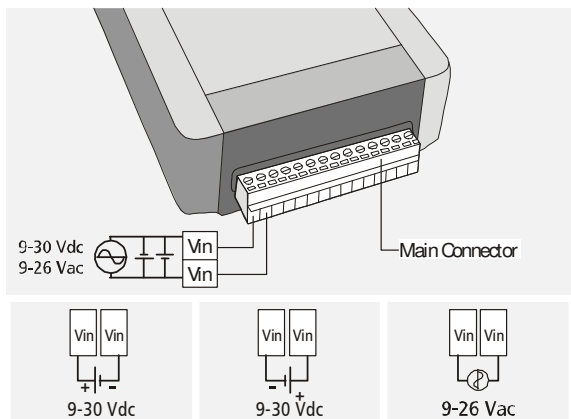
This product must be installed and powered according to its ratings and installation instructions.

The unit shall be powered from a NEC class 2 source of supply or a LPS source, having an output rated 9-26 Volts AC, 9-30 Volts DC, 200 mA min.

The installation of this product inside shall be in accordance with the NEC, specifically Article

725-54. Wiring from/to this unit is to be Class 2 wiring and shall be segregated from other wiring in the equipment as noted in the NEC.

The network connection is made through the Ethernet connector (see figure). Use a crossover network cable if the connection is made directly to a PC.



Front and Rear View

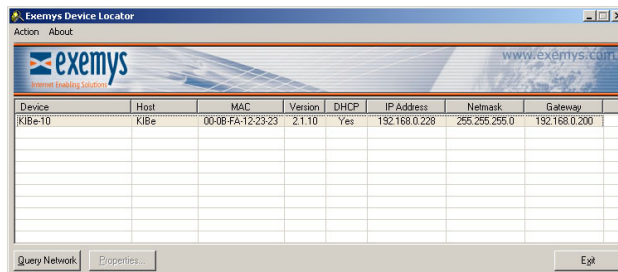
## 2. Configuration

### NOTE.

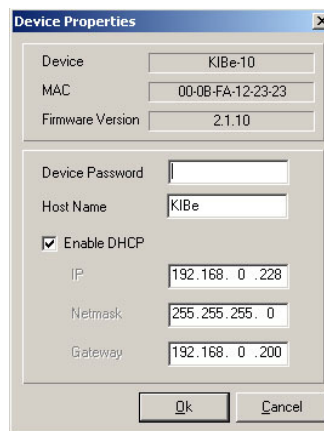
If you do not have a PC in the Network running Windows 95/98/NT-2000, you will find an alternative method to configure the network basic parameters in the User's Manual.

To configure KIBe-E you will need an IP address to be assigned to the KIBe-E or a DHCP server in the network. Follow the next steps to configure KIBe-E:

- Connect KIBe-E to the Ethernet network.
- Connect KIBe-E to the power and turn it on.
- Execute the Program "Exemys Device Locator" from a PC within the same network. You will find this program in the CD that is distributed together with this product. KIBe will appear in the list of devices found in the network.



- Double-click on KIBe-E in the list or press Properties.



- If your Network has a DHCP server, select "Enable DHCP" and click Ok.

- If your network does not have a DHCP server, you must complete manually the network parameters.

- In the Properties dialog box type:
  - IP Address
  - Netmask
  - Gateway

- Then click Ok.

- KIBe-E will reset to accept the configuration changes made. After a few seconds, if the yellow led of the network connector (see figure) blinks, being dark most of the time, and lightened only for a short instant, it means that KIBe-E accepted the configuration and reset correctly.

### NOTE.

KIBe-E does not provide a default password for remote configuration. If this is the first time you configure KIBe-E, do not type a password in the Properties dialog box. You will be able to change this password later on by following the instructions contained in the User's Manual.

- To enter to the KIBe configuration web page use a web browser that allows Javascript. By typing KIBe's IP Address in the "address" field of your browser, you will access KIBe configuration web page.